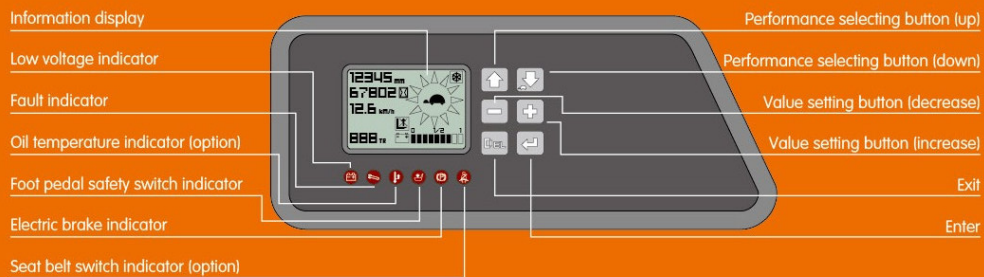


# HELI

The new design instrument display gives a clear, convenient and more intuitive set of information to the operator, including operation status and fault detection.



#### STANDARD CONFIGURATION

- Travelling motor 48v/6.5kw
- Lifting motor 48v/12.5kw
- Steering motor 48v/0.4kw
- Zapi travelling motor controller
- Zapi lifting motor controller
- Zapi steering motor controller
- Electromagnetic brake
- Battery 48v/560Ah
- DC/DC converter
- Low noisy gear pump
- Control valve ( four throw)
- 4600mm three stage full free lift mast
- Integral sideshifter
- Standard fork
- Backrest
- Polyurethane tyre
- LED meter
- Front working light
- Warning light

#### OPTIONAL DEVICE

- Three-stage full free lift mast (other lifting height)
- Fork with other length
- Fork extension
- Lifting height pre-selector
- Monitoring system
- Other battery
- German brand hoppecker battery
- Italian brand FAAM battery
- Battery charger
- Customer own colours



#### ANHUI HELI CO., LTD.

ADD: NO.668 Fangxing Street, Economical Development Zone, Hefei, P.R.China  
TEL : (86 551)63639068, 63639258, 63639358, 63662105  
FAX : (86 551)63639966  
WEBSITE : <http://www.helichina.net>  
Email : [heli@helichina.net](mailto:heli@helichina.net)

\* Details of specifications and equipment are based on information available at time of printing and may change without notice.

© 2015 heli copyright Catalog No.2015.06 HELI Print

# HELI

LIFTING THE FUTURE



# 2.0t

**G series** / INTELLIGENT  
ENVIRONMENT-FRIENDLY

## GII series AC ELECTRIC reach truck-sit down type



No.1 MANUFACTURER AND SELLER OF FORKLIFTS  
IN CHINA FOR 24 CONSECUTIVE YEARS







# 2.0t

## GII series AC ELECTRIC reach truck-sit down type

### » FEATURES OF THE COMPLETED TRUCK

#### *Three phase AC type motor technology*

- > Three phase AC type motor control on travelling, lifting and steering
- > Good acceleration
- > Fast and sensitive response to travel direction shifting
- > Free from maintenance motor without carbon brush having long service life and low maintenance cost
- > Energy regeneration during deceleration extending operation hours
- > Max. travelling speed without load 20% increased
- > Max. travelling speed with load 27% increased

#### *Newly designed hydraulic system*

- > Newly designed hydraulic system with high working efficiency
- > High power lifting motor
- > MOSFET lifting speed governing electric controller
- > New type low noisy gear pump
- > Max. lifting speed without load 15% increased
- > Max. lifting speed with load 15% increased

 **series** / INTELLIGENT  
ENVIRONMENT-FRIENDLY

#### *Optimized intelligent design*

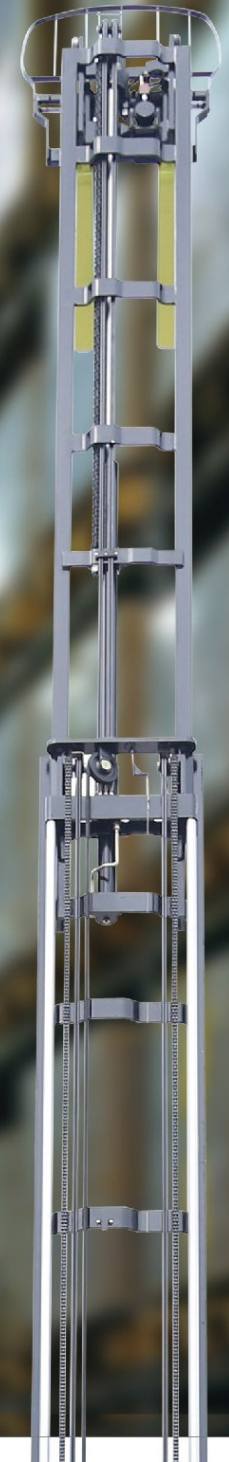
- > ZAPI travelling motor controller
- > ZAPI lifting motor controller
- > ZAPI steering motor controller
- > CAN bus technology
- > Emergency power off of both main circuit and control circuit
- > Parking brake on slope
- > Operation sequence protection
- > Travelling speed control
- > Electric controller self protection
- > Lifting height pre-selector (optional)

#### *Advanced EPS electric powered steering*

- > EPS electric powered steering offering easy, flexible, high efficient and mute operation
- > Steering motor controller
- > Automatic centering function
- > Real-time shifting between 180°steering mode and 360° steering mode
- > Automatic limit on speed and accelerated speed when steering

#### *Easy operated finger control*

- > To control hydraulic functions
- > Clear operating units
- > Proportional solenoid offering a stable and comfort lowering action







### **Display Module**

- > High quality meter displaying important operating data
- > Display of traveling direction and drive wheel angle
- > Display of 180°/360° steering mode
- > Display of battery quantity and fault code
- > Travelling mode selection
- > Lifting lock indication
- > Hour meter
- > Labor hour display
- > Time
- > Fork height display (optional)

### **Wide view mast**

- > Good view when loaded
- > Integral sideshifter
- > Mast vertical, fork tilt
- > High residual load capacity at high lift height
- > Lift height range:4600-12500mm
- > Buffering during lifting and lowering
- > Buffering on lifting and lowering limit
- > Buffering when cylinder moving forward

### **Comfortable cab**

- > Comfortable cab offering driver good working environment and easy operation
- > Easy reach to important operation
- > Adjustable seat (seat position /backrest angle )

### **Overhead guard**

- > Fence style overhead guard offering good operator visibility.
- > Good bevelled design with front ring beam giving a high standard of operator protection.